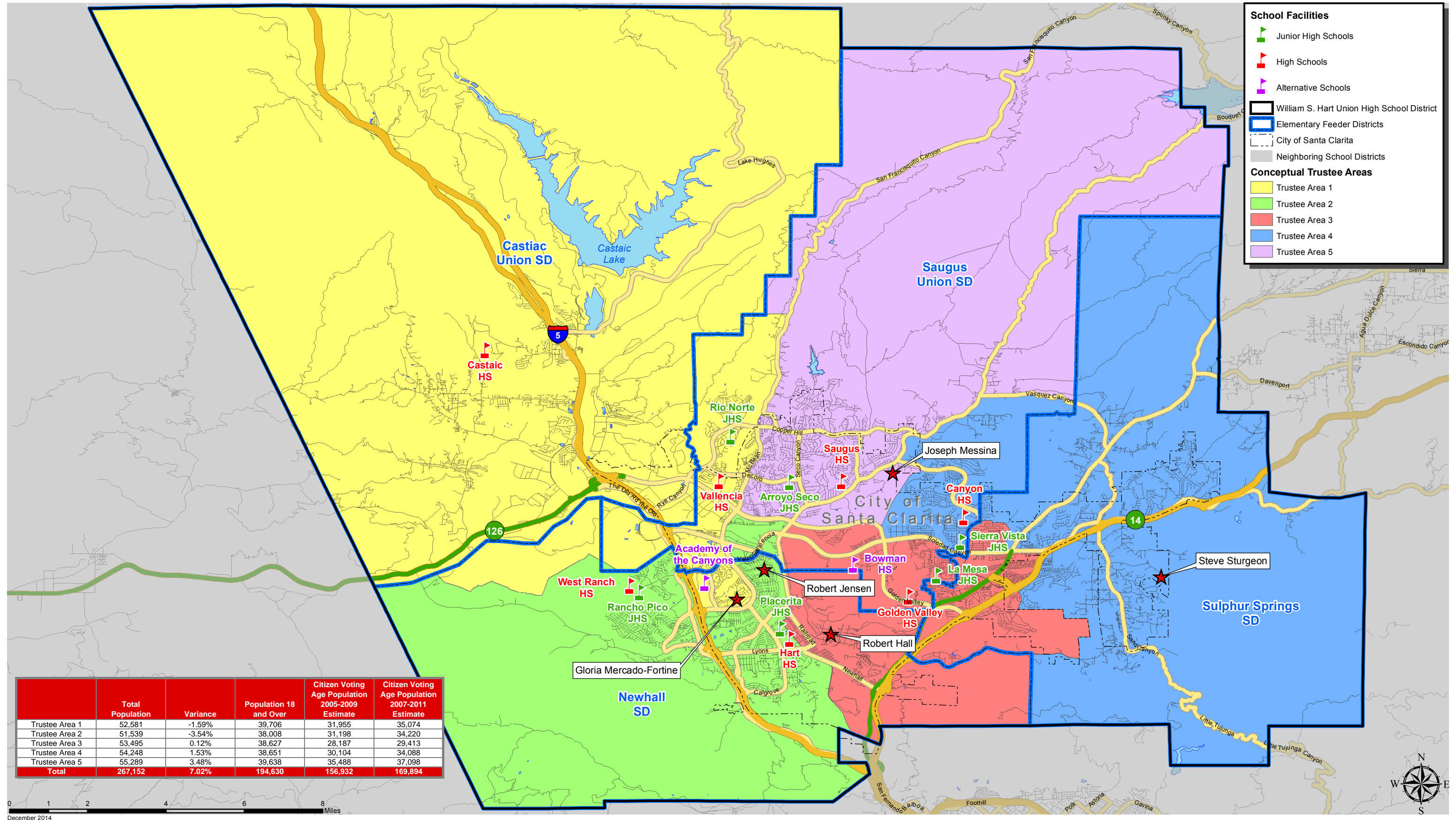


William S. Hart Union High School District

Conceptual Trustee Areas - Scenario 3



	Total Population	Variance	Population 18 and Over	Citizen Voting Age Population 2005-2009 Estimate	Citizen Voting Age Population 2007-2011 Estimate
Trustee Area 1	52,581	-1.59%	39,706	31,955	35,074
Trustee Area 2	51,539	-3.54%	38,008	31,198	34,220
Trustee Area 3	53,495	0.12%	38,627	28,187	29,413
Trustee Area 4	54,248	1.53%	38,651	30,104	34,088
Trustee Area 5	55,289	3.48%	39,638	35,488	37,098
Total	267,152	7.02%	194,630	156,932	169,894

0 1 2 4 6 8 Miles
December 2014

William S. Hart Union High School District

Conceptual Trustee Areas - Scenario 3

Total Population

	Trustee Area 1	Trustee Area 2	Trustee Area 3	Trustee Area 4	Trustee Area 5	Variance
Population	52,581	51,539	53,495	54,248	55,289	
Population Variance	-849	-1,891	65	818	1,859	7.02%
	-1.59%	-3.54%	0.12%	1.53%	3.48%	
Hispanic/Latino	14,069	10,418	24,592	17,196	10,863	
	26.76%	20.21%	45.97%	31.70%	19.65%	
White	26,410	31,334	20,628	27,626	36,311	
	50.23%	60.80%	38.56%	50.93%	65.67%	
Black/African American	3,606	1,284	2,436	2,386	1,358	
	6.86%	2.49%	4.55%	4.40%	2.46%	
American Indian/Alaska Native	90	129	147	146	125	
	0.17%	0.25%	0.27%	0.27%	0.23%	
Asian	6,717	6,730	4,201	5,163	4,798	
	12.77%	13.06%	7.85%	9.52%	8.68%	
Native Hawaiian/Other Pacific Islander	49	55	83	78	71	
	0.09%	0.11%	0.16%	0.14%	0.13%	
Other	156	139	153	139	124	
	0.30%	0.27%	0.29%	0.26%	0.22%	
Two or More Races	1,484	1,450	1,255	1,514	1,639	
	2.82%	2.81%	2.35%	2.79%	2.96%	

Population 18 and Over

	Trustee Area 1	Trustee Area 2	Trustee Area 3	Trustee Area 4	Trustee Area 5
Population	39,706	38,008	38,627	38,651	39,638
Population Variance	780	-918	-299	-275	712
	2.00%	-2.36%	-0.77%	-0.71%	1.83%
Hispanic/Latino	10,548	6,941	15,841	10,975	7,021
	26.57%	18.26%	41.01%	28.40%	17.71%
White	20,213	24,191	16,884	21,237	26,967
	50.91%	63.65%	43.71%	54.95%	68.03%
Black/African American	3,176	985	1,762	1,659	1,006
	8.00%	2.59%	4.56%	4.29%	2.54%
American Indian/Alaska Native	75	96	126	111	103
	0.19%	0.25%	0.33%	0.29%	0.26%
Asian	4,827	4,934	3,185	3,745	3,662
	12.16%	12.98%	8.25%	9.69%	9.24%
Native Hawaiian/Other Pacific Islander	39	39	62	59	56
	0.10%	0.10%	0.16%	0.15%	0.14%
Other	117	97	85	77	81
	0.29%	0.26%	0.22%	0.20%	0.20%
Two or More Races	711	725	682	788	742
	1.79%	1.91%	1.77%	2.04%	1.87%

Citizens by Voting Age Population Estimate (2005-2009)

	Trustee Area 1	Trustee Area 2	Trustee Area 3	Trustee Area 4	Trustee Area 5
Population	31,955	31,198	28,187	30,104	35,488
Population Variance	569	-188	-3,199	-1,282	4,102
	1.81%	-0.60%	-10.19%	-4.09%	13.07%
Hispanic/Latino	7,561	4,796	6,861	6,129	5,391
	23.66%	15.37%	24.34%	20.36%	15.19%
White	17,070	22,241	17,041	19,663	25,269
	53.42%	71.29%	60.46%	65.32%	71.20%
Black/African American	3,562	857	1,428	870	1,001
	11.15%	2.75%	5.07%	2.89%	2.82%
American Indian/Alaska Native	44	98	89	218	128
	0.14%	0.31%	0.32%	0.72%	0.36%
Asian	2,645	2,715	1,690	2,460	2,849
	8.28%	8.70%	6.00%	8.17%	8.03%
Native Hawaiian/Other Pacific Islander	0	0	77	43	65
	0.00%	0.00%	0.27%	0.14%	0.18%
Other	N/A	N/A	N/A	N/A	N/A
	N/A	N/A	N/A	N/A	N/A
Two or More Races	1,073	491	1,001	721	785
	3.36%	1.57%	3.55%	2.40%	2.21%

Citizens by Voting Age Population Estimate (2007-2011)

	Trustee Area 1	Trustee Area 2	Trustee Area 3	Trustee Area 4	Trustee Area 5
Population	35,074	34,220	29,413	34,088	37,098
Population Variance	1,095	241	-4,566	110	3,119
	3.22%	0.71%	-13.44%	0.32%	9.18%
Hispanic/Latino	8,389	5,288	8,615	8,347	6,201
	23.92%	15.45%	29.29%	24.49%	16.71%
White	19,433	23,801	16,286	20,611	26,411
	55.40%	69.55%	55.37%	60.46%	71.19%
Black/African American	3,051	914	1,599	1,556	922
	8.70%	2.67%	5.44%	4.57%	2.48%
American Indian/Alaska Native	61	85	46	85	86
	0.17%	0.25%	0.16%	0.25%	0.23%
Asian	3,677	3,621	2,431	2,913	2,945
	10.48%	10.58%	8.26%	8.55%	7.94%
Native Hawaiian/Other Pacific Islander	36	34	52	48	53
	0.10%	0.10%	0.18%	0.14%	0.14%
Other	N/A	N/A	N/A	N/A	N/A
	N/A	N/A	N/A	N/A	N/A
Two or More Races	427	477	384	528	481
	1.22%	1.39%	1.31%	1.55%	1.30%